

# Unmatched Track Power for True Paddy Performance.



Specially Designed For



Paddy

Can also be used For



Wheat



Maize



Red Gram



Soybean



Raagi



Sunflower



Moong



Barley



Grams

**VISHAL**  
**MARLIN**  
TRAC TITAN TT12  
AXIAL FLOW TRACK COMBINE HARVESTER

# VISHAL Marlin TracTitan TT 12

## AXIAL FLOW TRACK COMBINE HARVESTER

### TECHNICAL SPECIFICATIONS

#### ENGINE

Manufacturer	: Ashok Leyland
Starting System	: Electric Start
Structure Type	: Water Cooled, 4 Stroke, Direct Injection, Turbo
Engine Net Power	: 111 HP
Rated Speed	: 2200 r/min

#### REEL

Type	: Pick Up Tyne
Diameter	: 900 mm
Reel Plate Qty	: 4 Pcs (3 Main + 1 Divider)

#### MAIN DIMENSIONS

Length	: 5560 mm
Width	: 2700 mm
Height	: 2740 mm
Operation Mass	: 5050 Kg (Approx.)
Min. Ground Clearance	: 590 mm (From Center)

#### CUTTER BAR

Total Header Width	: 2700 mm
Cutting Knife Type	: Serrated, Normalized
Header Auger Type	: Telescopic Horizontal Conveying Auger
Feeding Capacity	: 7.5 kg/s
Working Width	: 7.7 Ft

#### CRAWLER

Model	: Bridgestone / McLaren
Rubber Track	: 450 x 90 x 60 (mm)

#### WORKING CAPACITY

Theory Speed	: 0-7.6 km/h
Work hour Productivity	: 0.4-0.8 hm/h
Fuel Consumption	: 7.5 to 10 Ltr/h (approx.)

#### THRESHING CYLINDER

Quantity	: 1
Main Cylinder	: Axial Flow Spike-Tooth type
Cylinder Dimensions	: 630 x 2135
Concave Sieve Type	: Open Flat Bar with Wires
Sieves Box	: Adjustable, Double Sieves for better cleaning of grains

#### BLOWER FAN

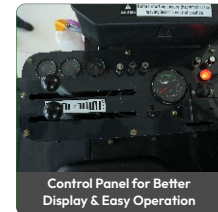
Type	: Centrifugal Type
Diameter	: 365 mm
Qty	: 1 Pc

#### GEAR BOX & TRANSMISSION

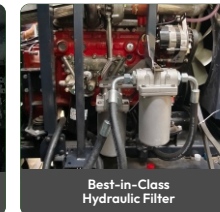
Manufacturer	: Reggiana Gear Box
Variation	: Available
Transmission	: Hydraulics -Eaton Pump -Danfoss Motors

#### CAPACITY

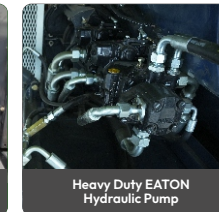
Grain Tank Capacity	: 900 Kgs
Fuel Tank Capacity	: 120 ltrs (approx.)
Grain unloading (Hydraulic Operating)	: High Positioned Swing Type Discharge Auger with 270° rotation



Control Panel for Better Display & Easy Operation



Best-in-Class Hydraulic Filter



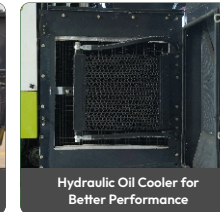
Heavy Duty EATON Hydraulic Pump



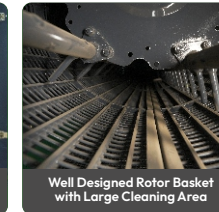
Canopy Musical System for long work hour operation



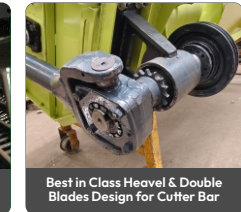
Well Designed Operational Structure



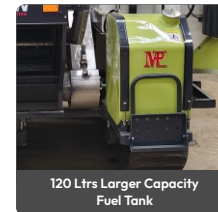
Hydraulic Oil Cooler for Better Performance



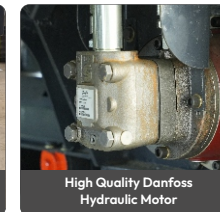
Well Designed Rotor Basket with Large Cleaning Area



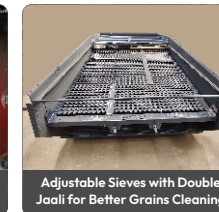
Best in Class Heavel & Double Blades Design for Cutter Bar



120 Ltrs Larger Capacity Fuel Tank



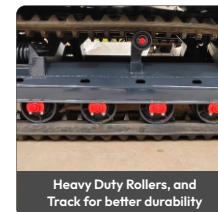
High Quality Danfoss Hydraulic Motor



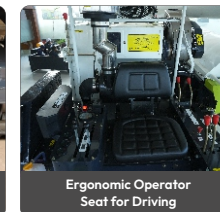
Adjustable Sieves with Double Jaali for Better Grains Cleaning



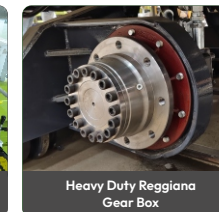
Heavy Duty Reel and Cutter Bar



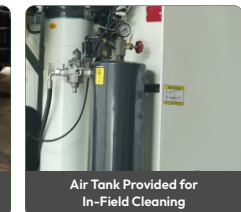
Heavy Duty Rollers, and Track for better durability



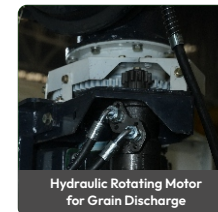
Ergonomic Operator Seat for Driving



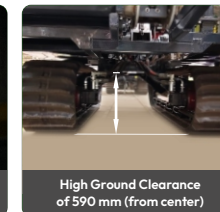
Heavy Duty Reggiana Gear Box



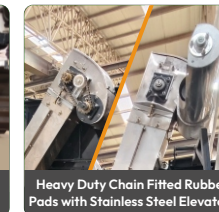
Air Tank Provided for In-Field Cleaning



Hydraulic Rotating Motor for Grain Discharge



High Ground Clearance of 590 mm (from center)



Heavy Duty Chain Fitted Rubber Pads with Stainless Steel Elevators



Larger Grain Storage with Easy-to-Maintenance Design

\*Specifications are subject to change without prior notice

## MANKU AGRO TECH PVT. LTD.

P.O. Box No. 04, Sehajpura Road, Samana - 147101, District. Patiala (PB)

Mob. : 92572-24012, 92572-25012 | Website : [www.vishalharvesters.com](http://www.vishalharvesters.com)

Email : [vishalcombine@manku.co.in](mailto:vishalcombine@manku.co.in) | [export@manku.co.in](mailto:export@manku.co.in)

Authorised Dealer: